

AS-250 INOX TROPICAL GL MODEL

THE HIGHEST SERIES OF WATER COOLERS WITH AN ICE BANK DESIGNED FOR LARGE RESTAURANTS, PUBS AND OTHER HOSPITALITY FACILITIES.



CZECH UP YOUR
BEER WATER WINE DRINK
COOLING AND DISPENSING SYSTEMS

TROPICAL CONDITIONS

AS-110 INOX TROPICAL features a thickened 45 mm insulation, even on the top cover, and is designed for extreme tropical conditions. This device can fully function even at ambient temperatures of up to 45°C.



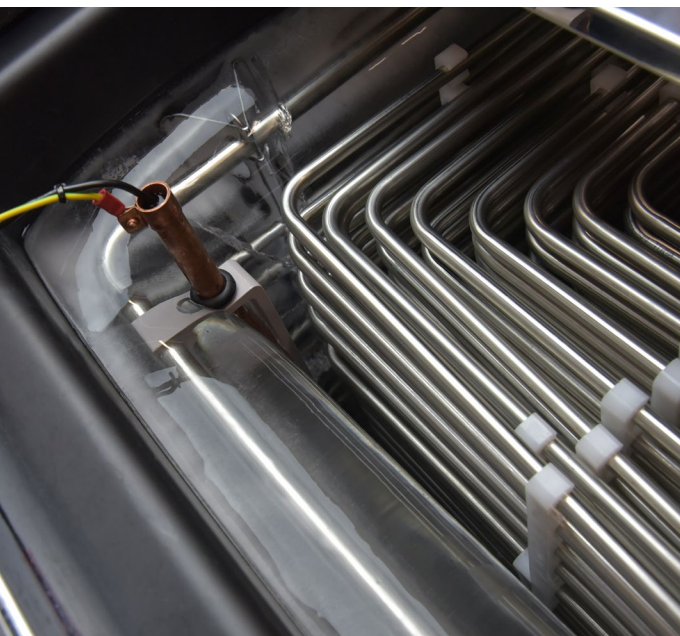


AS-250 INOX TROPICAL 4X COILS GREEN LINE

The AS-250 INOX Tropical Green Line undercounter water coolers are equipped with a classic ice bank cooling technology and are primarily designed for professional beverage dispensing in large pubs and restaurants, beer festivals, or major events.

The INOX Tropical cooling units feature reinforced insulation of 45 mm, including the top cover, and are designed for extreme tropical conditions. These units can operate in ambient temperatures of up to 45 °C. A major innovation in this new model is the vertical design with practical doors that allow for easy servicing and maintenance. This cooler is equipped with a cooling unit with a compressor output 2300W, combined with a 100L tank, providing enough capacity for rapid dispensing or very demanding operations.

For this model, we have developed new square cooling coils, which are nearly identical in length: 7x20m and 1x15m, allowing for up to 8 different beverages. As an optional accessory, transport wheels can be purchased for easier handling.



<< TEMPERATURE CONTROL

A standard included feature is a thermostat that allows smooth and precise regulation of the beverage temperature.

<< NUMBER OF COOLED BEVERAGES

New set of square shaped cooling coils for cooling up to 8 drinks.

< MOBILE

With the option to add transport wheels, it can be transformed into a practical mobile cooler.

| BENEFITS AND USEFUL FEATURES

TROPICAL CONDITIONS - The AS INOX TROPICAL cooling units feature reinforced 45 mm insulation, including the top cover, and are designed for extreme tropical conditions. These units can operate in ambient temperatures of up to 45 °C.

INNOVATION - All our water coolers undergo continuous development and meet all the latest safety standards and certifications (both Czech and European).

AS TECHNOLOGY - This is a water cooling technology using an ice bank, where full ice formation ensures maximum cooling performance.

PERFORMANCE - The AS INOX Tropical NEW GREEN LINE draft beverage systems offer enhanced continuous performance, allowing the consistent dispensing of well-chilled beverages in quantities corresponding to their numerical designation in liters.

AGITATOR WITH PUMP - The cooler includes an agitator with a recirculation pump with a delivery height of 8 meters.

GREEN LINE - The LINDR GREEN LINE technology is environmentally friendly thanks to the use of the eco-friendly refrigerant R-290. Thanks to this design, each product achieves 20% higher energy efficiency and 20% lower power consumption. We have introduced an energy saving system in the production.

DESIGN & SERVICEABILITY - The modern layout of the cooling system ensures easy access for any servicing or maintenance needs.

EQUIPMENT - Standard features include a thermostat for smooth and precise beverage temperature control, a cooling coil, and quick-connect fittings.

OVERALL COMPACTNESS - Vertical construction with doors.

OPTIONAL ACCESSORY - Practical transport wheels.

COOLING COILS - A new set of square-shaped cooling coils with uniform lengths.

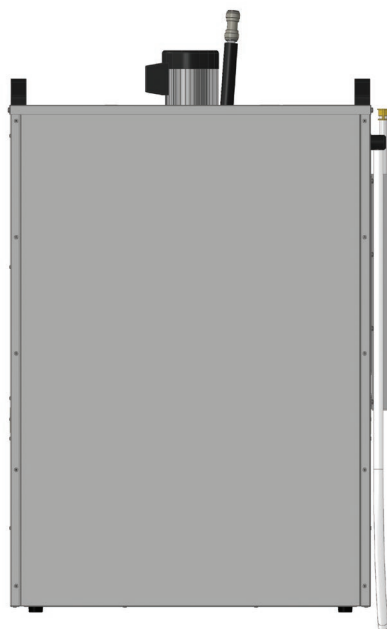
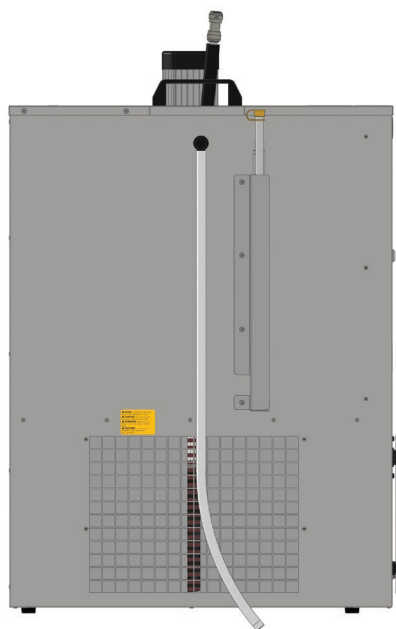
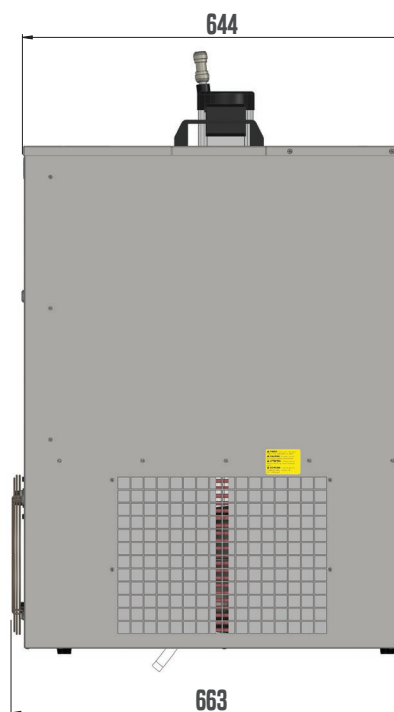
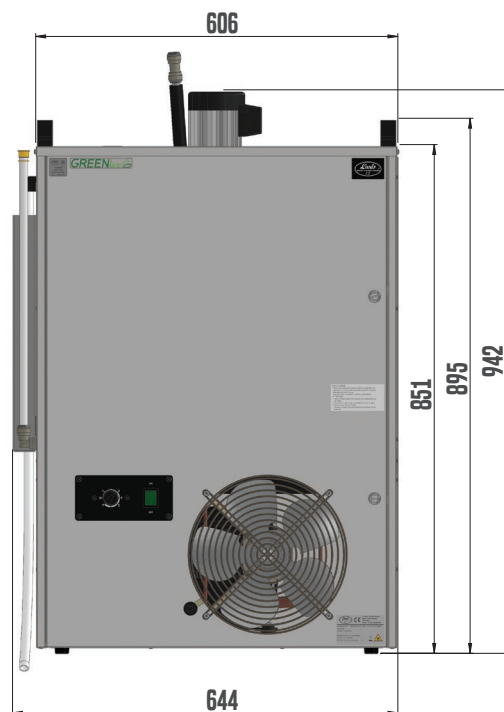


WE KNOW THAT DETAILS
MATTER

SERVICE DOORS

A major innovation in this new model is the vertical design with practical doors that allow for easy servicing and maintenance.

AS-250 INOX TROPICAL GREEN LINE



MODEL	AS-250 INOX TROPICAL GL
COOLING POWER OF THE COMPRESSOR (HP)	1
COOLING POWER OF THE COMPRESSOR (W)	2360
MAX. COOLING CAPACITY TO 0°C / TK 45°C (L/HOUR)	200
CONTINUOUS COOLING PERFORMANCE (L/HOUR)	180
THERMAL GRADIENT ΔT (°C)	10
WATER TANK CAPACITY (L)	100
ICE BANK (KG)	40
DISPLACEMENT OF RECIRCULATION PUMP (M)	8
RECIRCULATION CONNECTION (FITTINGS)	1/2
NUMBER OF COOLED BEVERAGES (PCS)	4
POWER (W)	897
AMPERAGE (A)	3,90
NET WEIGHT (KG)	74
REFRIGERANT TYPE	R290
VOLTAGE (V)	220-240V 50HZ~1
WATER DRAIN WITH WATERMARK	YES
DIGITAL THERMOSTAT	NO
CUSTOMIZED OPTIONS	
NUMBER OF COOLED BEVERAGES (PCS)	4-8
LENGTH OF COOLING COILS (M)	7X20, 1X15
DIAMETER OF COOLING COIL (MM)	8X0,5
INDUSTRIAL WHEELS	YES
POWER CABLE PLUG	YES
DIGITAL THERMOSTAT	YES